



**DOLFIELD  
OFFICE PARK**

■  
**OWINGS  
MILLS**

■ **300**

*Redland Court*

*For Leasing Information  
Call Arthur Adler  
at  
(410) 363-3434*

# 300 Redland Court

## 300 REDLAND COURT

- 75,000 square feet on three floors
- 9 foot ceiling heights
- Suites equipped with their own HVAC system, and powder room
- Generous tenant improvement package
- Abundant parking
- Distinctive landscaping
- Lobby or store front access

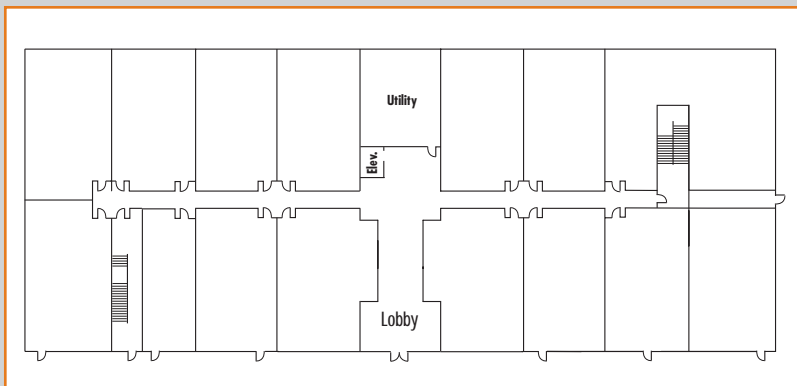
## DOLFIELD OFFICE PARK

- Within 2 miles of I-795 exit at Owings Mills Boulevard
- Within 2 miles of I-795 exit at Franklin Boulevard
- Within 2 miles of Owings Mills Town Center
- Within 3 miles of Owings Mills Metro Station
- Over 200,000 square feet proposed in 3 buildings in this 15-acre park
- Campus Setting
- Owner managed by David S. Brown Enterprises

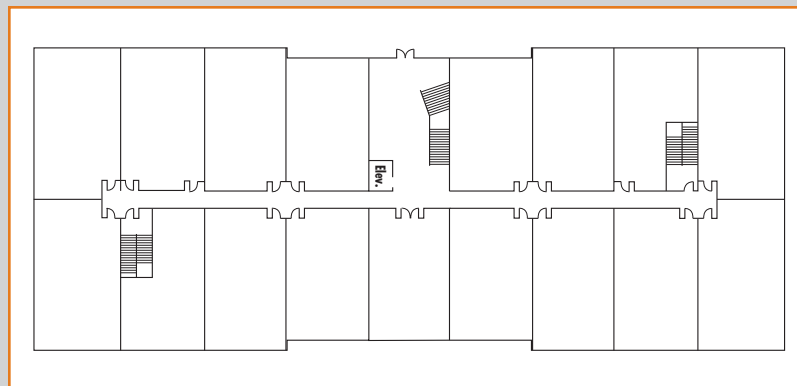
*David S. Brown*  
ENTERPRISES

100 Painters Mill Road, Suite 900  
Owings Mills, Maryland 21117  
Builders • Developers • Leasing  
Property Management • Sales

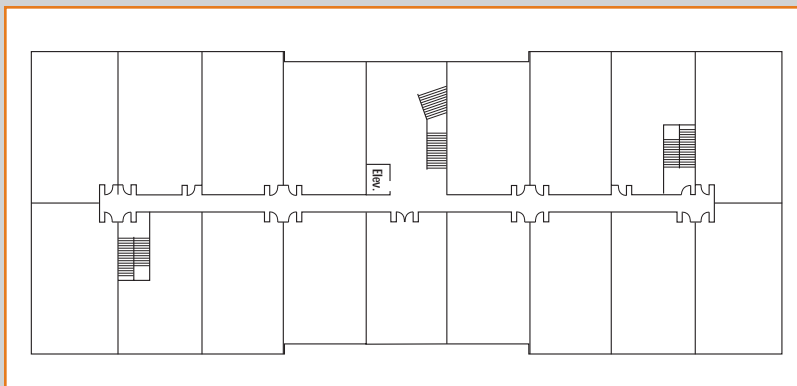
Visit our website at [www.davidsbrown.com](http://www.davidsbrown.com)



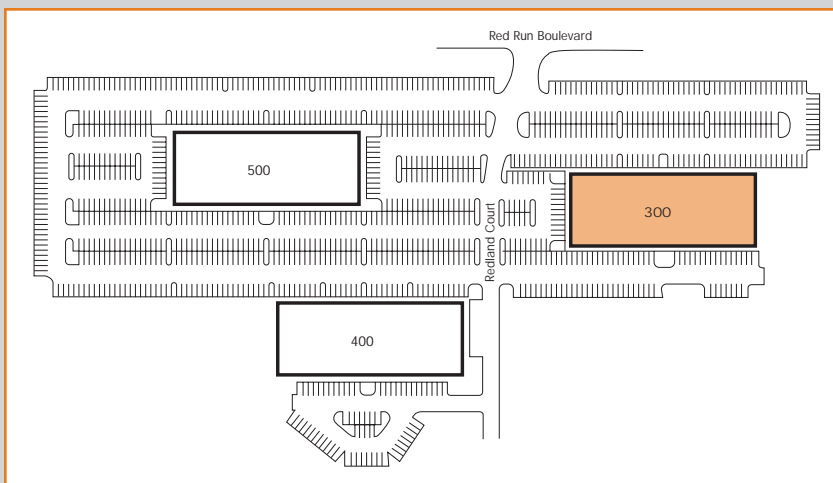
*First Floor*



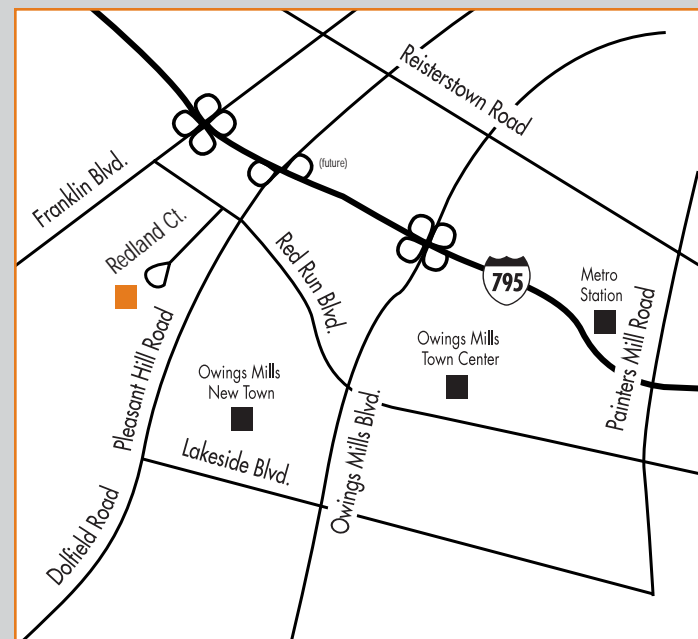
*Second Floor*



*Third Floor*



*Dolfield Office Park*



■ *For Leasing Information*  
**Call Arthur Adler at**  
**(410) 363-3434**