

Symphony
C E N T E R

Downtown convenience meets uptown style.

Baltimore gathers to celebrate art, music and community.

You... at the center of it all.

Many of the state's renowned universities and governmental agencies are housed.

The notes of Puccini, Mozart and Broadway echo in the streets.



Symphony C E N T E R

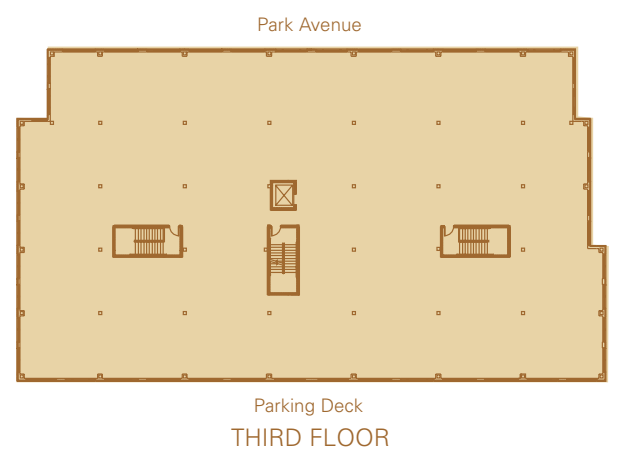
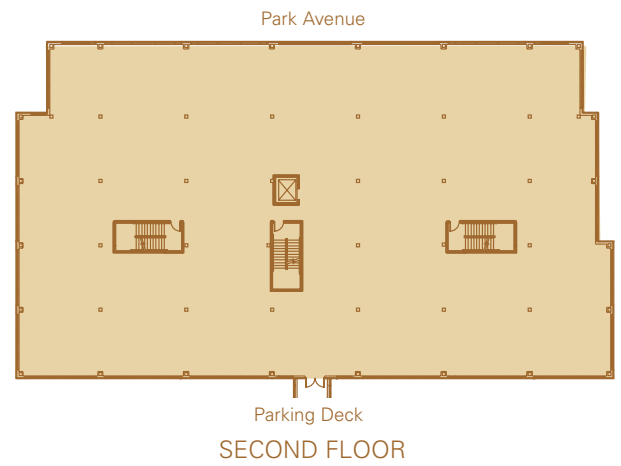
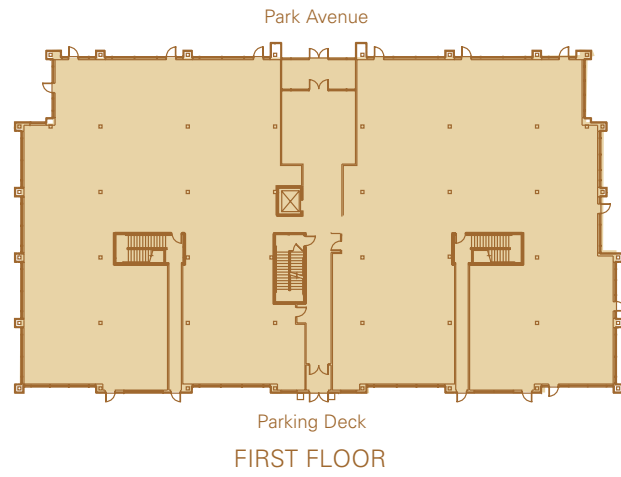
*I*t's a full-service, transit-oriented, office, retail and residential development in an area that encompasses so much of Baltimore's spirit. From the Meyerhoff Symphony Hall, the Lyric Opera House and Maryland General Hospital to the Maryland Institute College of Art, the University of Baltimore and the Herbert O'Connor State Office Complex, there is a pulse that runs through this neighborhood—of history, of refinement, and of great things to come.



Some of the center's features include:

- Two three-story, Class A office buildings
- 120,000 square feet of rentable space
- Easy access to MTA light rail, metro and bus stops
- Pedestrian walkways to light rail
- Generous tenant improvement packages
- Beautiful landscaped courtyards
- 24 hours a day, 7 days a week access to buildings
- State-of-the-art electric, access and information systems
- At-grade enclosed bridge entry to building from parking deck
- 9-foot finished ceilings
- Retail establishments on first floor





In addition to being at the heart of Baltimore's cultural center, this location also provides easy access to I-83, I-95, Penn Station, the Inner Harbor, Camden Yards, University of Maryland Medical System, University of Maryland Professional Schools, University of Baltimore and Maryland Institute College of Art.



*D*avid S. Brown Enterprises is a local, family-owned, full-service real estate company providing development, construction, leasing, sales and management services. David S. Brown Enterprises has been providing superior results to discerning tenants and buyers since 1933 through impeccable craftsmanship, attention to detail and personalized service.



A & R Development Corporation is a Baltimore-based company that has developed both housing and commercial projects all over the East Coast of the United States. A & R Development Corporation's projects range from the small community-based project to large institutional projects. The principals of A & R have over 75 years of combined experience in all aspects of real estate, finance, sales, construction and development.

A&R Development Corp.

For more information about the Symphony Center, call Arthur Adler at 410-363-3434.



David S. Brown
ENTERPRISES

410-363-3434 www.davidsbrown.com